

Staffed Activity Areas from The Carnival Party, LLC



Hosting a larger sized event that you need FUN and UNIQUE ACTIVITIES for guests to do? Consider adding one or more of our **STAFFED Activity Areas** to your next BIG event! These Activity Areas are **FULLY STAFFED**. We do all the set up, we run and supervise the area during the event and then we do all the clean up at the end. **Our Activity Areas are each designed for guests to come and go throughout the duration of your event allowing for many guests to play and enjoy over the course of your event.** Set up time is 1.5-2 hours BEFORE the start of your event and most take 1 hour to break down after your event. Most options are available indoors or outdoors year-round, 7 days week!

2025 Themed Activity Stations

Carnival	Medieval
Mini Golf	The Quest
Candyland	Big Game Fun
Lego	Royal Party
All Sta	Beach Party
Bowling	Hole in One
Spin Art Bike	Race Track
Face Painting	Giant Partner Games
Mad Science Slime Making	Backyard Fun
Ballon Dogs 101	Twisted Madness
Craft Station	Woodworking (String Art)
Canvas Paint Party	Concessions (Popcorn and Coton Candy)
Spin Art	Halloween Options
Safari Adventure	Winter Holiday Options

Cost ranges \$395-\$795 for most options for 2 Hour Events.

Use this flyer if you are looking for the following:

Community Public Event: You are planning a larger sized event that you need a variety of activities that guests will matriculate in and out of over the course of 2-4 hours.

School Family Event: You are planning a larger sized event for your school and need activities that are STAFFED! (If you have volunteers, see our Family Events for clients with Volunteers)

School Fun Day: You are planning a school fun day and you need station activities for kids to attend in groups of 1-3 classrooms and you need this activity STAFFED. You do not have volunteers to run the activity.

Other: You want to plan an activity for guests to come and go through that will last 15-30 minutes. While your event may be 2-4 hours, you do not need this much activity time for individual guests as you do not expect them to stay the entire time or you have other things that you want them to do. Ie. Open House, Movie Night, Book Fair, Trunk or Treat Event, Tree Lighting, Performances, etc.

Other flyers to consider for other situations:

Mini Family Events 2025: You expect 30 or fewer kids that you want entertained for 1.5-2 hours. Mini Events are themed and have a special event schedule to keep guests engaged throughout the duration of 2 hours. Mini events are geared to keep smaller groups entertained longer with one theme. Great for small events such as birthday parties and small club events. Mix and Match to make a big event! \$395-\$795

Family Events 2025: You expect 75 or fewer kids that you want entertained for 1.5-2 hours. Family Events are themed and have a special event schedule to keep guests engaged throughout the duration of 2 hours. They include activities, special events and popcorn and cotton candy. Great for larger sized birthday parties or club events. \$895-\$1995

Rentals 2025: For clients that need equipment 4+ hours or longer and have someone to supervise the equipment use, we do offer rentals of some of our equipment. This is NOT the cheapest option; it is the way to get the equipment for the LONGEST duration. (Typical options include the following: Carnival, Lego, Mini Golf, Candyland, Bowling, Beach Party, Giant Partner Games.) \$495-\$795

Family Events for Schools and Other Non-Profits with Volunteers 2025: We offer special packages designed for clients that have 10+ volunteers to assist with the event. We bring everything, set it all up, train your volunteers and then facilitate the event. This is the most economical way to host a school event, but does require 10+ GOOD volunteers willing to run games and activities. \$895-\$1295

School Fun Days 2025: We have special School Fun Day packages that are great if you have 10+ GOOD volunteers or classroom staff willing to run games and activities. We bring everything, set it all up, train your volunteers, greet your classrooms and facilitate the event. Super easy way to host a school fun day for your students if you have parent volunteers or classroom staff are willing to do all the games and activities with their students. \$1295-\$2995

After school Programs and Kids Camp Programs: We have themed options in which campers attend in groups of 20-50 kids at once as sessions. We do all of the set up and then facilitate the event with your staff. \$495-\$995+ Location and Size of camp, duration of sessions and over all day event duration will impact the price.

Carnival ~ 10 Carnival Games / Go Fish Craft / Mini Ticket Booth



Mini Golf ~ 9 Holes Mini Golf



Candyland ~ Life Sized Candyland Game – Giant Castle, with 40 Tiles and 6 Characters.



Lego ~ 2000 Giant Legos / Set up as 20 Mini Pallets



All Star ~ 8 Sports Themed Games (4 Double Sided Stations) / Star Craft to make and take



Bowling ~ 2 Lanes Bowling



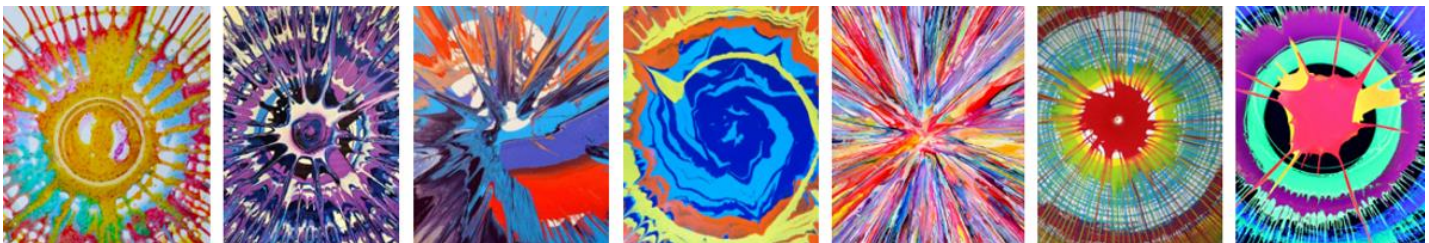
Bowling Lanes are adjustable 12'-30'

October ~ By request, Ghost Pin Bowling (Pins Shaped Like Ghosts)

Winter ~ By request, Snowman Bowling (Pins Shaped Like Snowman)

Spin Art Bike ~ Partner Art ~

Guests make abstract art by pedaling the stationary bike and drizzling paint on paper



Face Painting



Face Painting for LARGER SIZED GROUPS!

Our face painter can provide FAST simple designs that enable us to do 100+ an hour. Swirls, Patriotic Stipes, moustaches, Butterfly, Peace Sign, Bomb, Arrow, Snake, etc. This option is great when you have a very large group and want to be certain all guests are afforded the opportunity to get face painting. We can do up to 120 SIMPLE CHEEK ART DESIGNS per hour. Detailed Artwork averages 20-30 per hour.

Mad Science ~ Slime Making Activity

Slime station is set up for kids to make a customized small batch of slime to take home in a small sandwich sized plastic bag. We bring all the supplies, tables and chairs, aprons and goggles as needed for guests to use!



Balloon Dogs 101 ~ Kids learn to make Balloon Dogs



In small groups, we teach the kids to make a balloon dog! For kids under 8 or when you want 100's to be handed out, we will make them for the kids.

Craft Station

Assorted Choices of Ceramic and Wood items! Banks, Magnets, Birdhouse, etc.!



Canvas Paint Party

Free Style or Instructional painting classes / All supplies / tables, chairs if you do not have your own, or if you already have tables, we will provide all table covering for them!



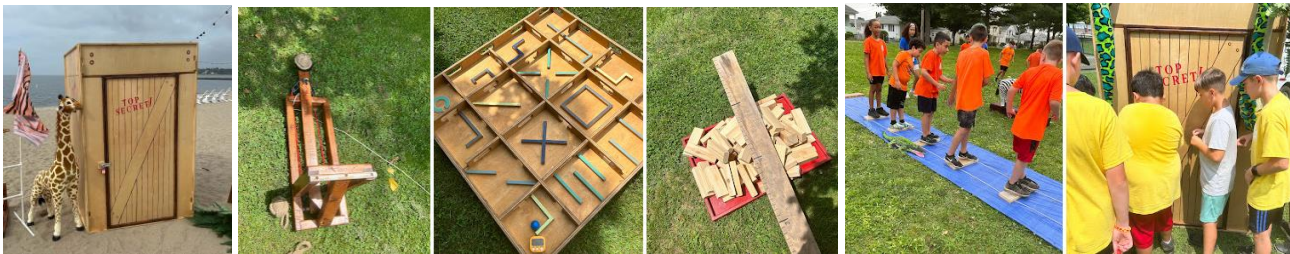
Spin Art



5"x 8" Spin Art
Electricity Required
Traditional Spin Art Machine!

Safari Adventure – Back Again in 2025!

6-10 Physical Games and Challenges / Safari Box of Candy Prizes / Win KEYS that potentially open treasure chest



Medieval

Medieval Castle with Crown Making / 5 Medieval Carnival Games / Catapult Catch Challenge



The Quest- New Clues 2025!



The Quest is to unlock the Castle and Treasure Chest by solving the clues in the clue boxes! Each quest can be planned for 15 minutes to 1-hour sessions to keep your guests intrigued and entertained! Great for ages 8+ in peer groups or for younger players as a family activity.

Big Game Fun Giant Games for GROUPS to play at once. This station is on a schedule of group games. We would do 3-8 Games back-to-back and then loop again as necessary. TBD on the day of your event based on space available and expected attendance. Typical Choices include Giant Maze Craze / Kerplunk / Bingo (3'x4' Bingo Cards kids play in small groups) / Puzzle Relay (Teams relay for best time to make a giant puzzle) / Giant Bucket Stacking (Teams relay) / Giant Pong Team Relays



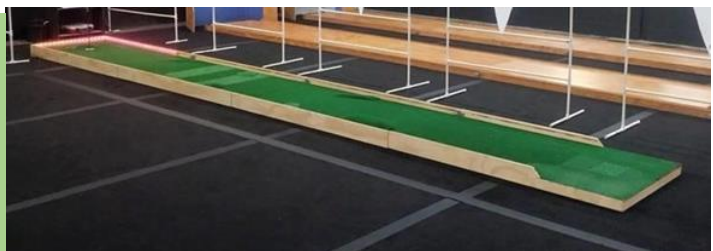
Royal Party- Preschool Sized Carnival Games

Royal Castle / 8 Mini Carnival Games (4 double sided stations) / Party Masquerade Mask Making



Hole In One

Golf Hole is 3 Feet Wide by 30 Feet. When necessary, it can be shorten to 12', 18' or 24' Set up with Flags and Fencing. Prizes for Hole in Ones! All Ages!

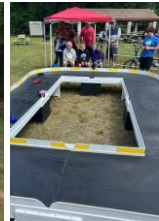


Beach Party (Luau)

5 Beach Themed Carnival Party / Limbo Station / Hula Hoop Station / Tattoos / Volcano and Palm Tree



Race Track



Hand Held Remote Controls
1:24 Remote Controlled Cars
10' x 15' Oval Race Track
Up to 10 Players at once!

Giant Partner Games

10 Giant Games for 2-6 Players at a time This station can be set up as free choice for guests to do at their leisure or more structured as 15-minute sessions where guests are allowed to enter and play for a predetermined time to allow for all guests at your event to have an opportunity to play. Games TBD by structure and ages participating in the event.



Backyard Fun~



This station is a schedule of group games. We would do 4-8 Events back-to-back and then loop again as appropriate for your event. Typical Events: Sack Races, Three Legged Races, Dodge Ball, Scavenger hunt, Tug of War, Water Balloon Toss, Kickball / No Run Baseball, Relays – Pan and Egg, Tunnel Relays etc.

Twisted Madness – 20'x40' Twister Mat

Giant Twister 20'x40' Mat for up to 60 at once



Wood Working – String Art (Rubber Band) ART ~

Kids make String or rubber band art with wood, stencils, sandpaper, hammer, and nails. They cut their wood,



Concessions Station

This is fun add on when you book one of our other events. We do not do this as a solo event. Popcorn Making / Cotton Candy (Vanilla Only) or Cotton Candy Buffet (6+ Flavors)



Halloween (October Only) - See Halloween Flyer for more details!

Halloween Mini Golf – Themed in Halloween Obstacles

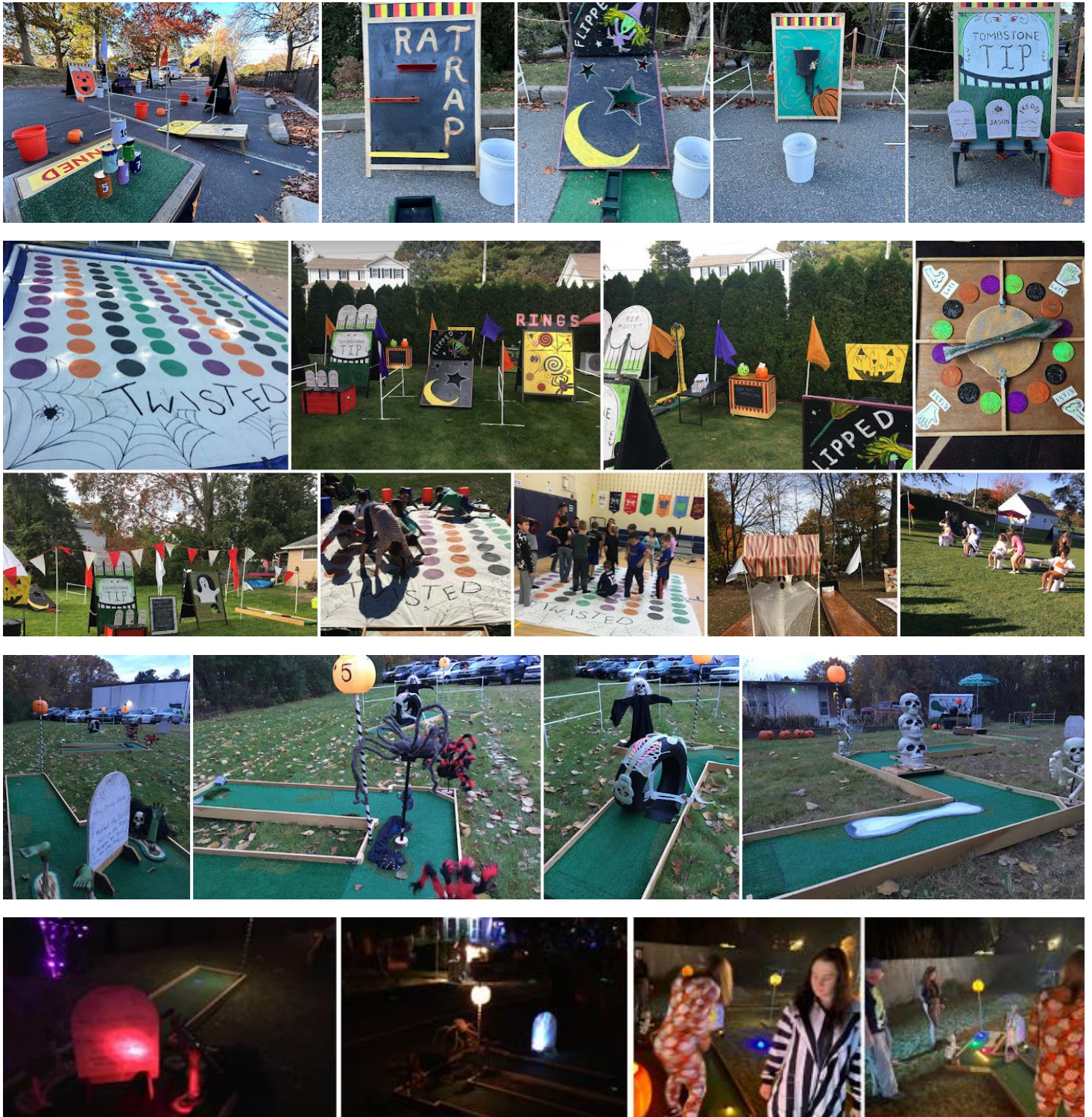
Halloween Night Time Golf (Glow Golf Balls)

Carnival – Games include Ghosts, Witches, Pumpkins, Skull Themes

Bowling – Ghost Shaped Pins

Candyland – Tiles are black, white, purple, orange, yellow. Characters are witch, creeper, skeleton, Ghost, pumpkin, Candy King.

Quest – Clues and puzzles all revolve around Halloween.



Winter Holidays (December Only) – See Winter Flyer for more details!

Christmas Themed Options These parties are decorated / themed for Christmas.

Mini Golf – 6 Holes – Decorations include Tree, Poinsettia, Giant Ornament, Red Green Wrapped Gifts, Red and Green Loop, Candy Canes etc.

Carnival - These are themed in Santa, Grinch, Christmas Tree, etc. and are versions of our regular games.

Quest – Clues and Puzzles all revolve around Christmas Traditions.

Bowling – **SNOWMAN Bowling**. This is our bowling lanes with the pins replaced with snowman shaped pins. Decorated in Blue and White. Available December to February.

Hanukkah Themed Options - These parties are decorated / themed for Hannukah

Mini Golf – 6 Holes – Theme Colors are blue and gold. Obstacles include Menorah, Star of David, Dreidel, Blue Wrapped gifts, Blue and Gold Loop, Blue Flowers etc.

Quest – Clues and Puzzles all revolve around Hannukah Traditions



HOW MANY GUESTS CAN ACTIVITY STATIONS ENTERTAIN?

Pages 13-14 provide information to assist you when planning for how many people the ACTIVITY STATIONS can typically accommodate simultaneously as well over the course of an hour. These are our best estimates after years of doing events. Consider the figures as the MAX NUMBER of guests you should plan to be using the stations at once time.

Keep in mind, you may want to factor in other activities you are booking with other vendors: Food Truck, DJ, Pony Rides, Baby Animals, Bounce House, Obstacle Runs, Snow Cones, Face Painters, Balloon Artists, Foam Pits, Magicians, etc. Consider asking your other vendors how many they can accommodate to be certain you plan accordingly.

Lastly, some SIDE NOTES:

Open House Style - If you wish for guests to come, play and then go, you do not need to plan for the full number of guests for many of the activities. Just be certain to ADVERTISE the window of time you want them to come during with time allowing for them to play! I.E. If you booked 12:00-4:00 p.m. and you want guests to come and play for about 1-1.5 hours, **ADVERTISE to stop by anytime between 12-3** to enjoy the games and activities. This allows the late comers time to play and you won't need to ask vendors to stay open for over time. This is most typical of community events, fairs etc. where you expect 100's-1000s of people to attend over the course of 3-6 hours. Families will stay together and often parents will remain with kids for the duration of the event.

Party Style- If you want most guests to arrive at the same time and you expect them to stay for the duration of the event, you will need to book enough activities for the duration of the event to avoid long waiting lines. Advertise the start time and then indicate how long it will be. **"Family Fun Night @ 5:00 p.m. Come join us for 1.5 hours of activities and fun!"** This is most typical of social events for schools, country clubs, etc. where being social with other members in the group is as important as the activities themselves.

Schools and Social Clubs (Beach Clubs, Country Clubs, etc.) These events typically need FULL staffing for activities you plan for as in many cases, kids between 5-12 years of age are unsupervised and playing games in small groups of their peers so they need extra attention. Families are more familiar and comfortable at these locations to let kids "wander" while they socialize. Staff on hand prevents things from getting chaotic at the games and activities, which makes an over all more pleasant atmosphere for all party goers. If you expect you event to be LESS than 50 kids, see our Mini Events Flyer! Please discuss with your event planner when booking.

Community Events for the public. Often parents tend to stay closer to their children at public events. Parents will be more apt to help their kids with questions on games and activities and help younger ones follow along. Kids are more apt to not fool around or take equipment that is not theirs when they are with their parents. Hence, we can sometimes double up stations with one staff for a discounted price. Contact the office for full details.

School Fun Days. Most of the options in this flyer are available as an activity for 1-2 classrooms for 15-30 minutes during school fun days. The station is fully staffed. We do all the set up. You let us know your schedule in advance so that we can plan accordingly. We greet the class. Give them instructions and then run the station. SUPER EASY for you, fun for kids!

The Carnival Party, LLC 401-641-8533 info@thecarnivalparty.com

www.thecarnivalparty.com / www.kidspartiesbytcp.com / www.theminigolfparty.com

THEME	MAX Players Per Hour	Average time you should expect guest to be engaged in this station	Number of Players you can expect to be playing +/-or waiting in a short line at the station at any given time	(if applicable) Notes	AGE RANGES MOST appropriate	MINIMUM Amount of space to plan on for equipment and player space to walk around for an event of more than 100 guests
Carnival	200	20-30 Minutes	50	10 Games	5-12	40x40
Mini Golf	200	10-30 Minutes for a round of golf	75	9 Holes Duration depends on intensity of play. Teens Adults playing together take much longer. Young Kids playing solo will only take 10 minutes or so.	All Ages	40x40
Candyland	100	5-15 minutes	30	We can control the speed of the game as necessary for the event.	4-12 Years Trivia For Teen Rounds	40x40
Lego	160	15-30 minutes	40	This can be done as sessions for larger events or free play for smaller event	4-12 years	40x40
All Star	100	10- 15 minutes	40	8 Games	5-12 years	30x30
Bowling	100	1-2 minutes per turn. Most take 3-5 turns if the lines aren't too long.	30	Often Kids will keep getting back in line to try again.	All Ages 4-100 years	15x30
Spin Art Bike	60	1-2 minutes per turn	20	This is partner art. Together guests make a spin art to divide in half to take home.	All Ages 4+	15x15
Spin Art	80	30 seconds to 1 minute per turn	15	This is spin art with the electrical spin art machine.	All Ages 3+	10x10 Electricity
Face Painting	15-120	30 seconds to 4 Minutes	20	Level of detail will dictate how many we can do in an hour. Youi would let us know after booking.	3-12 years	10x10
Mad Science	36	7-10 minutes	20	This is 36 per hour to make slime. This number can be doubled with additional staff / cost	5-12 years	10x10
Balloon Dogs 101	40	5-8 minutes	20	This number can be 100 per hour if we make basic Balloon Dogs for guests.	5-12 years	10x10
Craft Party	24	15 minutes	20	This is 24 to make a craft. This number can be double with additional staff / cost.	All Ages 4+	20x20
Paint Party	60	15 minutes	30	This is 5x7 canvas board.	All Ages	20x20
Medieval	50	15 minutes	20		4-12 years	40x40

THEME	MAX Players Per Hour	Average time you should expect guest to be engaged in this station	Number of Players you can expect to be playing +/- waiting in a short line at the station at any given time	(if applicable) Notes	AGE RANGES MOST appropriate	MINIMUM Amount of space to plan on for equipment and player space to walk around for an event of more than 100 guests
Royal	50	20 minutes	20	Designed for PRE K kids only.	2-6 years	30x30
Safari	80	15 minutes	30	We can do 2-4 Safari's Per hour. 15 Minute Safaris are for up to 20 / 30 minute Safaris would be for up to 30 players at once.	7- Adult	50x50
Quest	80	15 minutes	30	We can do 1-4 Quests per hour. 15 Minute quest would be for 20 guests, but we can do up 60 guests for an hour quest.	7- Adult	50x50
Beach Party	100	20 minutes	40		4-12 years	50x50
Giant Partner Games	100	5 minutes to 1 Hour.	40	Game play duration and interest vary greatly. Some games take 2 minutes while others take much longer. To achieve 100 per hour, we would do sessions.	All Ages	50x50
Big Game Fun	40-100	30 minutes to 1 Hour	50	We would select Big Games that are best suited for your guest numbers. The games will repeat every 20-60 minutes depending on the needs of your event.	All Ages	50x50
Race Track	50-100	5 Minutes	20	To get 100 per hour, we would do this as TEAM racing. 5 Cars with 10 drivers taking turns.	All Ages	20x20
Backyard Fun	150	5 minutes to full duration of the event.		This is a revolving schedule of games for very large groups of guests. OUTDOORS ONLY.	All Ages	30x100
Hole in One Fun	120	30 seconds per turn	20		All Ages	10x30
Twisted Madness	240	15 minutes	70	Needs larger sized are	All Ages	50x50
Woodworking	24	15 minutes	20	This number can be increased by adding more staffing / additional cost.	5-12	20x20
Cotton Candy	100	n/a	20	Single Flavor – No choice		10x10 ELECTRICITY
Cotton Candy Buffet	60	n/a	20	This is the buffet where guests choose their flavor from an assortment of 6+ flavors		10x10 ELECTRICITY
Popcorn	100	n/a	20	This is a small bag of popcorn.		10x10 ELECTRICITY
Halloween /Winter		REFER to the "REGULAR" option for numbers				

Other options we offer you might want to consider:

Family Events

Geared for events that are approximately 150 or less. (~ 75 kids / 75 adults). These options include all set up and staffing to run the event for you. We offer several packages that include games, activities, popcorn and cotton candy. Great for birthday parties and club events where you want everything taken care of! \$895-\$1995)

2025 Family Event Package Themes

Carnival	Lego	Family Game Night
Mini Golf	Olympic	Beach Party
Candyland	Canvas Paint Party	Halloween Options
Winter Holiday Options		

Mini Family Events

Geared for smaller crowds of 50 or less. (~ 30 kids) These options include all set up and staffing to run the event for you. Great for Birthday Parties and small club events. Great solo or mixed and matched to add more fun. Pricing ranges \$395-\$795

2025 Themed Activity Stations / Mini Events

Carnival	Face Painting	Medieval	Giant Partner Games
Mini Golf	Mad Science Slime Making	The Quest	Backyard Fun
Candyland	Ballon Dogs 101	Big Game Fun	Twisted Madness
Lego	Craft Station	Royal Party	Woodworking (String Art)
All Star	Canvas Paint Party	Beach Party	Concessions (Popcorn and Coton Candy)
Bowling	Spin Art	Hole in One	Halloween Options
Spin Art Bike	Safari Adventure	Race Track	Winter Holiday Options

Rentals (No Staffing)

If your event is all adults, very few kids or you have staffing to supervise, you may want to consider RENTALS. We bring the equipment, set it all up and get it turn key ready for play for you. Great option for clients that need 4+ hours. It is important to note that you assume all liability for lost, stolen or damaged equipment if our staff are not onsite.

Mini Golf ~ Legos ~ Bowling Lanes ~ Hole in One

By special request: Candyland ~ Giant Partner Games~ Beach Games~ Carnival Games

THE DIFFERENCE BETWEEN THE OPTIONS:

While the physical equipment is similar between the options, each option is run in certain ways to best suit the needs of event situations. Use the table below to get an idea of the differences between the options to help you choose what you think might be best.

DIFFERENCES BETWEEN OPTIONS	Mini Family Event	Activity Station	Family Event	Rentals
Max number of People these are geared for	30 kids / 20 Adults	See Flyer – They range from 50-300+	Up to 75 kids / 75 Adults	You plan and run as you wish
How long are the activities designed to engage individual guests?	Geared to keep most guests entertained for 1.5-2 hours.	Each station is geared for Guests to matriculate in and out so that 100's can participate over the duration of the event. Individual Guests typically will be entertained for 10-30 minutes at each station.	Geared to keep most guests entertained for 1.5-2 hours	You plan and run as you wish
When Should Guests Arrive to not miss out?	Within 15 minutes of the start time.	Before the last 30 minutes of your event.	Within 15 minutes of the start time.	You plan and run as you wish
How long is set up and break down?	1.5-2 Hours Set up 45 minutes Break Down	1.5-2 Hours Set up 45 minutes Break Down	2-3 Hours Set up 1-2 Hours Break Down	1.5-2 Hours Set up 45 minutes Break Down
What situations are these geared for?	<ul style="list-style-type: none"> Birthday Parties Campground Events Library Events Family Reunions Country Clubs Small School Events 	<ul style="list-style-type: none"> Community Fairs School Events Country Clubs Family Events School Fun Days Birthday Parties 	<ul style="list-style-type: none"> Big Birthday Parties Campground Events Country Clubs Grade Level School Events Library Events 	<ul style="list-style-type: none"> Adult Events Events with very few kids OR Events where you have an adult dedicated to supervising the area and assisting the kids.
STAFFING	1	1	2-3	None
Popcorn and Cotton Candy	Can be added	Can be added	Included	n/a
Average Cost	\$395-\$795	\$495-895	\$895-\$1995	\$595-\$995
What else do I need to do for this option? Provided you are within the attendance limits ...	(if applicable to your time frame) Food Drinks	Food Drinks as necessary. Plan for multiple stations or additional activities based on the number of guests you expect. See flyer for assistance in planning.	(if applicable to your time frame) Food Drinks	You plan as you wish.

Frequently Asked Questions:

Pricing typically ranges \$395-\$795 for most 2-hour Activity Stations as planned and detailed in this flyer within in a 2-hour radius from our offices in Rhode Island.

Deposits are \$200 - \$300 depending on the option, and due at the time of booking. We can proceed rain or shine for most options and can move indoors or undercover if you have a club house or pavilion. Deposits are not refundable, but may be applied to the rescheduled event.

Payments are accepted as CASH, CHECK or ONLINE via Debit CC or PayPal.

Insurance- The Carnival Party can provide you with a copy of our general insurance policy at no cost. However, should you need to be ADDITIONALLY insured or added to our insurance as a CERTIFICATE HOLDER, it is an additional \$50. This can be requested at the time of booking an event. We will contact our insurance and provide you with your certificate when the invoice / event summary is issued.

Uniforms or Special Attire- Please contact us directly if your event has special attire requirements. There is an additional fee of \$25 if you need staff to “re-dress” for the event after set up.

Booking and Deposit Information:

- All events are required to pay a deposit with us at the time of booking.
- Deposit ranges in price from \$200-\$500 depending on the scope of your event.
- Deposits are paid at the time of the reservation via cc, debit, or by mailing us a check within 5 business days of making a reservation.
- Invoices will be emailed to 3-4 weeks in advance of your event but if you need it sooner for check payment, let us know.
- Balance is due when services are rendered.
- Deposits are NOT refundable, but can be applied to the RESCHEDULED EVENT DATE as long as it falls Less than 31 days from your original date.

How to book an event with us / Sequence of Events / What to expect:

1. Choose the theme /option that works best for your event.
2. Contact us via email (info@thecarnivalparty.com) for availability. Either LET US KNOW the date(s) you need or let us know approximately WHEN you wish to hold an event and we will send you our availability.
3. Once we confirm your date is available, we will send you an email with a link to book the event online. We will give you 48 hours to make the reservation. You will take care of the deposit and details all online. A Confirmation will be automatically emailed to you and The Carnival Party to review.
4. If we have any questions, we will contact you. Otherwise, you are all set!
5. About 3-4 weeks before the event, we will send you an event summary with details on our arrival time for set up, a timeline for the event you have booked, along with an invoice for the balance due. If you need it sooner for check processing, let us know.
6. On the day of the event, we will arrive 1-3 hours BEFORE the start to set up and get ready. We will run the event as agreed and then clean up afterwards. Clean up typically takes 45 minutes -1.5 hours. Your exact set up times for your specific event will be included in the notes section on your invoice with your event summary.
7. Payment should be made online (following the link on the invoice) or in person to our staff by cash or business check on the day of the event.

Not Certain what option to pick – Need help planning? We are happy to give recommendations! Send us the following information via email (no cost) or make an appointment with our event hosts to come to your location and we will come to you to help you plan your next great event (\$100-\$300):

- **How many PARTICIPANTS do you expect?** Kids, Teens, Young Adults, Adults, Senior Citizens,
- **What best describes who you looking to entertain?** Kids only with parents nearby watching. Teens Only. College kids / Adults Only. Senior Citizens, etc. Activities for Parents and kids to do together? Activities for kids while parents are socializing elsewhere?
- **What else other than our services are you planning?** (Pool, beach, food, bounce house, entertainers, music, crafts etc.)
- **Indoors or outdoors?** Is it Rain or Shine?
- **What themes are you leaning towards or any you are NOT interested in?** This will help us quickly identify availability.
- **Any set up or break down restrictions that we need to know about?** Some options might be eliminated if you have restrictions or space or set up times.
- **Tell us about the relationship between your guests?**
 - Everyone knows each other very well? (typical at pool and beach clubs, school events etc.) These groups need just FUN ACTIVITY as they already are very familiar with each other.
 - Everyone is somewhat familiar with each other? (Typical at golf and racket clubs, campgrounds that host events) These groups need FUN ACTIVITY and maybe some minor help socializing and mixing)
 - Everyone is unfamiliar to each other? (Company Picnics, Community Events, etc.). These groups often need help MIXING AND JOINING INTO activities as much as they need the ACTIVITY ITSELF.

Custom Event Planning:

All of the events on the previous pages are considered pre-Planned events. If you prefer to mix and match your options, see our Staffed Activity Stations flyers. We have an assortment of 25+ options you can mix and match to design your own event and activities!

Deposits ~ Cancellations ~ Rain Dates etc.

Reservations are made by the client through our online form. *The Carnival Party will send you a link along with a password and reservation code to make your reservation. We will give you 48 hours from the time stamp on the email to do so, after which the hold will expire and we will begin to offer the date as available again.*

A **deposit** is necessary to secure your event date when you fill out the online form. *Deposits are approximately 25% of your overall event cost. Payments are made online via debit cards, credit cards and PayPal.*

Deposits are NOT refundable, however, should you have to unexpectedly cancel or postpone for any reason, it will be applied to the rescheduled event **provided the new date is within 30 days of the cancelled dates.**

RAIN DATE OPTIONS:

Adding a Rain Date – \$\$\$ You have the option to add an additional “date” as a rain date. **This is at an additional cost typically ranging \$200-\$600 depending on the staffing, equipment and day of the week.**

- This cost “buys” you a second timeslot in our schedule that allows you to pick the best weather day a couple days before your event.
- This option ensures that STAFFING, Themed EQUIPMENT, VEHICLE and TRAILER are set aside for you on TWO DAYS so that you can pick the best.
- There is no refund if the rain date is not needed.

If you have a specific weekend or day of the week that you have to re-schedule your event if you need to postpone, then you may want to consider this option.

Last minute Rain Date or Postponing ~ Free and Most Popular.

If your event approaches and you decide it is in your best interest to postpone, and you did not book a rain date, we can give you a new date at that time. We typically can offer you one of our days off or an empty timeslot in the coming 3-4 weeks. If you are flexible on a reschedule date, then

this is the best option! It is important to note that Fridays, Saturdays and Sundays as well as any holidays or days kids are off from school are typically NOT available.

Best Way to Communicate with our Office ~

- **Email.** *This allows us to keep track of our correspondence and allows us to get in touch with you as quickly as possible. We answer most emails within a day, and can answer them while traveling as well, but phone calls are VERY difficult when working onsite at another client's event. Typically, we only have 1 day a week set aside for phone calls, so it can be a long wait for me to get in touch with you via phone.*
- **One Contact Person / One Email Thread.** *We keep track of your correspondence, questions and concerns via the email history between our office and our clients. When emailing a question that includes all previous communications, ANY of our staff can typically quickly answer your questions from the road! However, when we receive a random email that either is from someone else or that has no thread history, we are limited to answering it when we are back in the office when we can refer back to all the information about your event.*

What you need to know about our company and keep in mind ~

- We get 100's of emails a week. No exaggeration!
- We give the SAME information to everyone regarding availability. A common mistake people make is that they do not realize that the availability we gave them may have been given to as many as 50 other people before them!!
- Once a formal booking request is made for a date, we will stop offering it for 48 hours to give the requester time to book it. If they do NOT book it, we assume you no longer need it and we open it up again and start offering it as available again. We do not "pester" people to book. We assume if it is important to the client, they will make the time to book.
- As a company we do about 500+ events a year, but availability is first come, first served. For some times of the year, dates are booked as far as a year in advance. If you are considering any of the following times and you are planning based on us, BE CERTAIN TO CONFIRM availability before choosing your date!
 - May Weekends for College Events
 - End of May and All of June for School Fun Days
 - End of June to End of August – Summer Camps
 - September Weekends – Fall Festivals
 - October Weekends – Halloween Themed Events
 - December – Holiday Parties and Winter Break Camp Programs
 - New Year's Eve

Phone Calls: In order to keep YOUR costs as low as possible, we do NOT have dedicated office staff. Rather, our event managers take turns covering the inquiries and questions we receive. **This keeps your cost lower and allows you to get answers from our experienced event managers directly.** The downside is that we are often onsite at other clients' events, so while we can quickly answer emails from our phones while traveling or on breaks during events, directly speaking on the phone is difficult. If you have questions that have not been answered and you wish to speak directly with us, send us an email to set up a phone call to discuss your event. If it is just a quick question on availability or pricing, send us an email. This will get you the fastest response.

The Carnival Party, LLC has been doing events for over 20 years.

We can make your next Event Fun for your Guests and Easy for you!

Interested in Booking or need additional information?

Contact us via EMAIL info@thecarnivalparty.com This is the fastest way to get in touch with us.

Be certain to include the following information:

- TOWN STATE
- EVENT DATE or APPROXIMATE DATE
- TYPE OF EVENT (Family Event, Community Event, School Fun Day etc)
- HOW MANY GUESTS DO YOU EXPECT? (# Kids / # Teens and Adults)
- WHAT THEME STATION(S) are you most interested in?
- WHAT OTHER THINGS do you already have planned (if anything)?

From the information above we will give you pricing and availability of options.

What you need to know about The Carnival Party OFFICE: We do not officially have office staff. Our EVENT HOSTS monitor and respond to emails throughout the week, however every day our priority is given to the day's EVENTS so during busy times of the year there will be a 1–2-day delay in email response. If we are unable to answer a question by email, we are happy to schedule conference calls during our next office hours.

WHY WE DO IT THIS WAY- Over the years we have found that the best person to answer your event questions and assist clients with planning are our HOSTS – the staff ONSITE that throw events!

IMPORTANT TO NOTE: As a company we do over 400 events per year, with many events being scheduled up to a year out for clients that do annual events. **So, if your event date is already set and NOT FLEXIBLE, WE HIGHLY RECOMMEND you contact us FIRST** to see if we have availability for your event date before investing in any time researching our options!

Contact us today for booking details: info@thecarnivalparty.com

www.thecarnivalparty.com

www.kidspartiesbytcp.com

www.theminigolfparty.com